

EVER CASE Thermal test result

Model Name: ECE4272



Approved by : Tony Chang

2004/7/5

Equipment under Test :

Test instrument:

Manufacturer : Cambridge Accusense INC.
Hardware : Thermocouple Temperature Monitor TCM-24
Software : AccuTrac Ver. 4



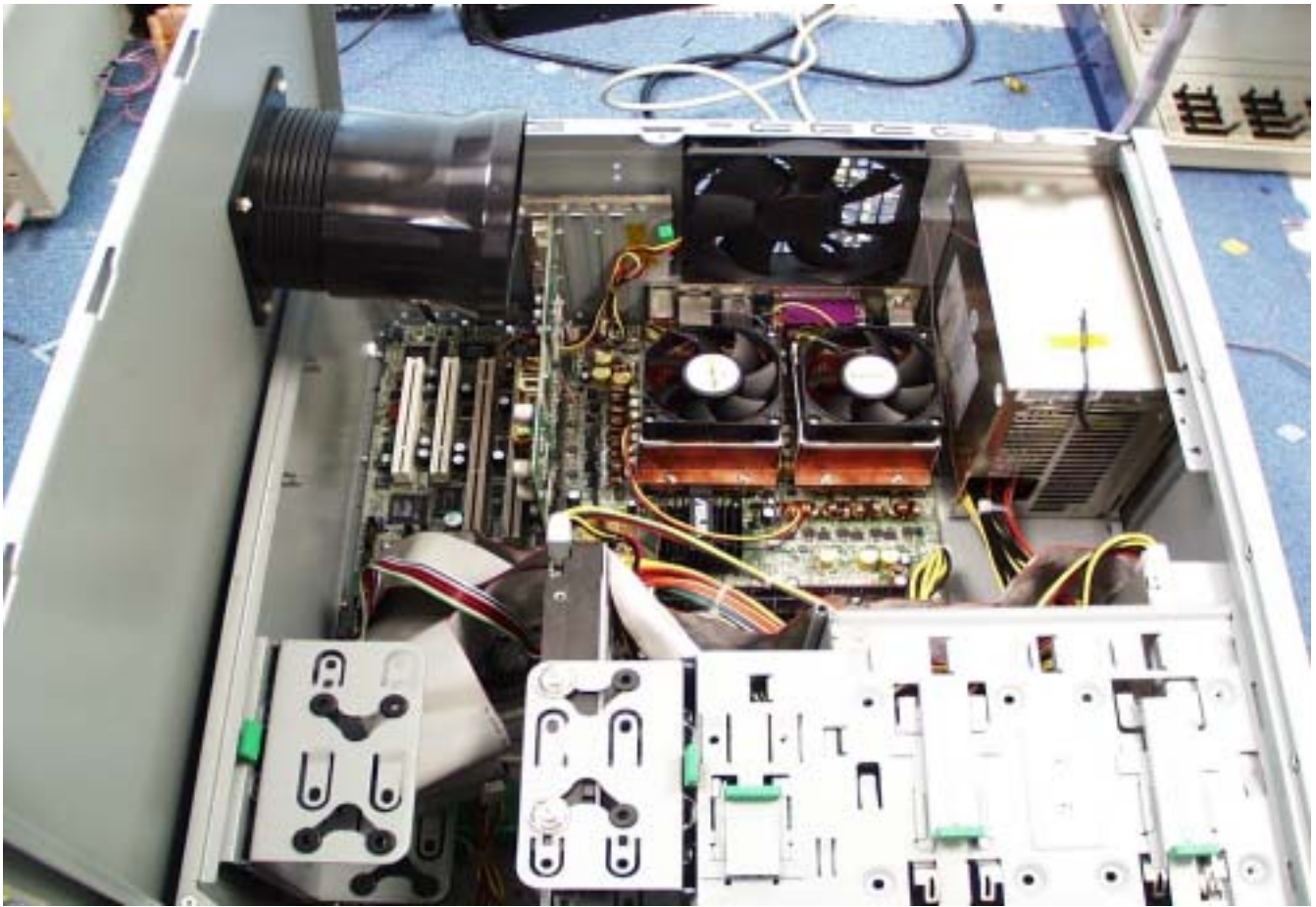
Test Configuration:

Component Desc.	Supplier	Model No.	Quantity
CPU	INTEL	Nocona 3.4GHz	2
Mainboard	ASUS	NCCH-DL	1
Memory	VDATA	DDR400 256MB	2
CPU Heat Sink	COOLJAG	JACB51C	2
VGA	ASUS	9520/TD/N/128M	1
PSU	ZIPPY	PSM-6600P	1
Hard disk	WD	WD2500 250GB 7200RPM	1
DVD-ROM	BENQ	DVP-1648A	1
Rear Fan(outlet)	GLOBE	S1202512L	1

FAN spec.

1. S1202512L : 120X120X25 mm, 2000rpm, 67.28CFM, 4.31mmAq, 34dB.

Sensor	CPU-t	CPU Tcase
	CPU_amb	Above the CPU heatsink
	RAM_amb	Centered between DIMMs in all 2 axes
	HDD	Above HDD IDE connector
	DVDROM	Above DVDROM IDE connector
	AGP chipset	Above the chipset heatsink
	VR chipset	Above the chipset
	PSU_amb	At the center of the largest intake vent



Test Software :

Operation System : Windows XP

Test program : Maximum Power Program for the Nocona Processor 1.3.2

Test Environment:

Operating ambient temperature : 35 dC

Evaluation Procedure :

1. Running Maximum Power Program for the Nocona Processor approximately 60 minutes, recording measurement.

Thermal Test Results :

Condition 1 : CPU workload power level 100%

35 dC ambient temperature

Test Criteria	Supplier's Spec. limit	Result	Margin	Status
CPU1_Tcase	70	64.2	-5.8	Pass
CPU1_amb	-	35.9	-	-
CPU2_Tcase	70	61	-9	Pass
CPU2_amb	-	44	-	-
RAM_amb	55	51.1	-3.9	Pass
AGP_amb	55	43.6	-11.4	Pass
VR_amb	105	56.5	-48.5	Pass
HARD DISK(S)	55	53.4	-1.6	Pass
DVDROM_amb	55	41.2	-13.8	Pass
PSU_amb	55	43.3	-11.7	Pass