

Evercase R9131B-G35

Design for Desktop Intel® MB

Inside View

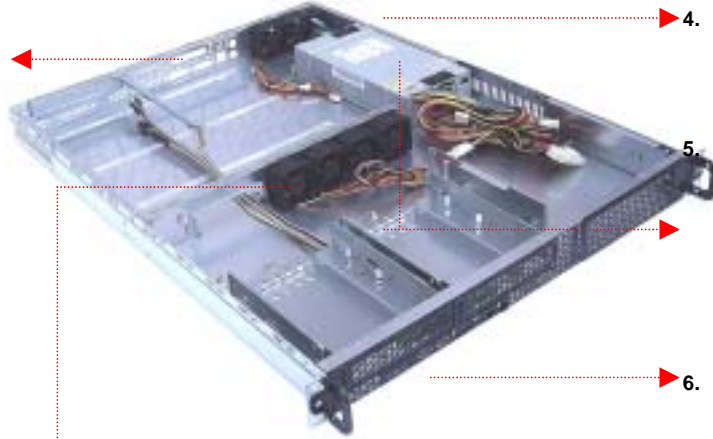
1. Customized I/O Shield.
(M913-GH)



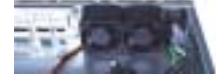
2. Optional (recommended)
active heatsink for LGA775
CPU.



3. Low noise level, high CFM
cooling center fans 4 pcs.



4. 2 pcs 4028 rear fans.



5. Quality EPS12V 350 watt
Power Supply.



6. Front Indicators: 2*USB ports,
HDD LED, reset switch,
and System Power LED

8. Standard rail break
(M913-RAL).



9. Standard 32 bits PCI Riser Card
for slot #9 (RCP122)



Specification

Model No.	R9131B-G35
Drive Space	2* Internal HDD or FDD + + 2* Internal or External HDD or FDD
Motherboard Accept:	Intel Desktop Mainboards: D925XECV2 D915PGN D915GMH D925XEBC2 D915PCY D915GEV D925XCV D915PCM D915GAV D925XBC D915PBL D915GAG D915PLWD D915GVWB D915PSY D915GLVG D915GUX
Expansion slot	One PCI 32 bit riser card (RCP122)
Power Supply	FSP350-601U, EPS 12V, 350w p/s
Ventilation	40mm*4 center fans + 40mm*2 rear fans : total 6 pcs
Measurement (with handle & PSU) - Weight	444mm(W) x 630mm(D) x 43.6 mm(H) 17.48" (W) x 24.80" (D) x 1.72" (H) - 8.3 kgs/18.28 lb
Packing Information	Standard packing: 1 pc/carton/3.0 cu.ft. Weight (NW/GW): 7.3/10.2 kgs ● 16.1/22.4 lbs 322/670 pcs (20/40 ft. container)