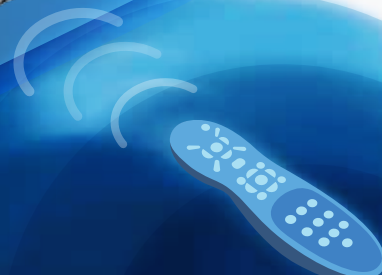




- Sliding IO door
- Fully Screwless Installation
- Thermally Advantaged Design
- Soft-closing Optical Drive Bay Door
- Infrared Receiver Lens for Multimedia Use



ECE 3505 4502



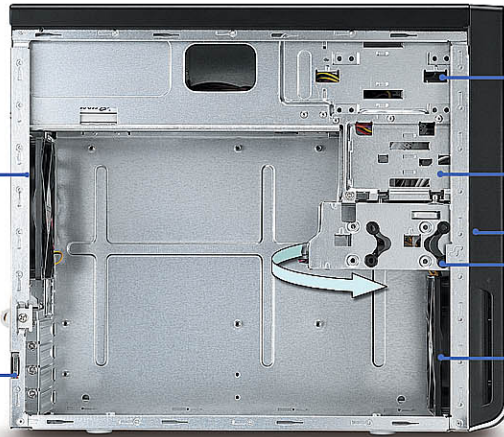
Super ATX Mid Tower & Micro ATX Tower Case

Model No. ECE4502/ECE3505



E3505 Inside view

- ❖ Optional 8cm, 9cm or 12cm front fan*1 for heat exhaust
- ❖ Pad lock
- ❖ Optional intrusion switch



- ❖ Screwless devices for two external 5.25" ODD + optional screwless rail set for 3.5" drive bays
- ❖ Optional Front IO kits
- ❖ Revolving cage for two internal 3.5" drive bays
- ❖ Optional 8cm, 9cm or 12cm front fan*1 for cool air intake

Features

- Mechanical and thermal test approved by Intel®.
- Excellent thermal and EMI performance for Intel® Prescott CPU.
- All around folded metal edge for safety installation.
- Screwless front panel and side door for quick assembly.
- Screwless/tool-less designs to minimize assembly time.
- Optional square logo adaptor.
- Optional supporting bar with 3 various length card holders.
- Optional front and rear fan : 6cm, 8cm, 9cm or 12 cm for excellent cooling.
- Detachable tool free HDD drive cage with optional shockproof rubber kits.
- Optional front I/O access - 2 (USB 2.0 version ready, support new Azalia) or 4*USB ports ,2*Audio and/or IEEE 1394 (FireWire).



Specification

Model No.	Mid Tower ECE4502	Micro ATX Tower ECE3505
Drive Space		
-5.25" (Exposed)	4	2
-3.5" (Exposed)	2	2
-3.5" (Hidden, 1" H)	2	2
-3.5" (Hid. options)	2	
Motherboard	Micro ATX ATX M/B (12x9.6")	Micro ATX M/B
Power Supply	ATX 12V	PSII or PSIII
Ventilation (Options)	Front: 6cm fan Left side: 8cm fan Rear: 8cm, 9cm or 12cm fan	Front /Rear: 8cm, 9cm or 12cm fan
Measurement (WxDxH)	192x482x426 mm 7.5x19.6x16.8 inch	190x420x362 mm 7.5/16.5/12.3 inch
Weight (NW/GW) - W/O PSU	8.2/9.2 kgs 18.0/20.2 lbs	6.0/7.0 kgs 13.2/15.4 lbs
Standard Packing - 20/40/40 H. FT CTNR	2.47 cu.ft./pc 407/839/935 pcs	1.80 cu.ft./pc 580/1170/1195 pcs
Bulk Packing - 20/40 FT CTNR	480/1056 pcs	

ECE3505-LGA New ATX Tower Case



Thermally Advantage Tower Case with new side door vent holes for Intel® Pentium® 4, Prescott LGA775 CPU (Intel® chassis air guide V1.1)

